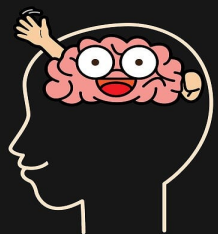


SUMMER  
2020



# Brainwaves



BRAIN WAVES

## *The BridgeLine Place*

### PROGRAM MANAGER' COLUMN

INSIDE THIS ISSUE	
Program Manager's	1
Virtual Classes	2
Administrative Unit Update	2
Socials	3
Book Review	3
Birthdays	4
Advocacy Visits	5
Gardens of Members and Staff	6
Upcoming Event	7
Clubhouse Wishlist	8

I do not know where to start because so much has happened in all our communities since the start of the COVID-19 pandemic. From the initial scramble to put plans in place to keep the clubhouse safely open in early March by requiring hand-washing and increased disinfecting practices of frequently touched surfaces to decision in mid-March to implement to close the clubhouse and shift to clubhouse staff working remotely, to assessing members for risk potential and providing emergency supplies in the initial weeks following shutdown, and to learning how to connect everyone to provide daily virtual services at the beginning of April.

The clubhouse remains available to our members through e-mail, Zoom, and by telephone. Since our clubhouse telephone operates through the internet, our members and other who need to talk to us can call the same clubhouse phone number and I will answer and direct the call to where it needs to go.

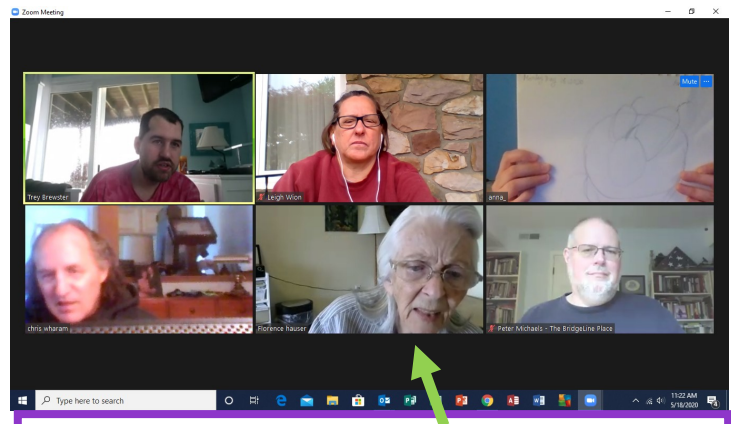
We've used this time to learn more about the services and supports that are available at the Brain Injury Association of Virginia and the disAbility Law Center.

This is our first attempt in putting a newsletter together using e-mail and Zoom. It took a while as we all are learning to work differently as we all learn how to use technology to our fullest capacity. Hope you enjoy reading about what we've been doing and are staying informed and safe where you are!

## CLUBHOUSE VIRTUAL CLASSES



Anna leads the group through Chair Yoga on Fridays. Some members choose to sit on their yoga mat. Leigh looks funny on her yoga mat as she stretches to do this screen shot!



This is Art Class with Florence. Florence taught a semester of Introduction to Drawing. We're all trying to see what Anna is holding up to her camera.

## ADMINISTRATIVE UNIT UPDATE

BY: TREY B.

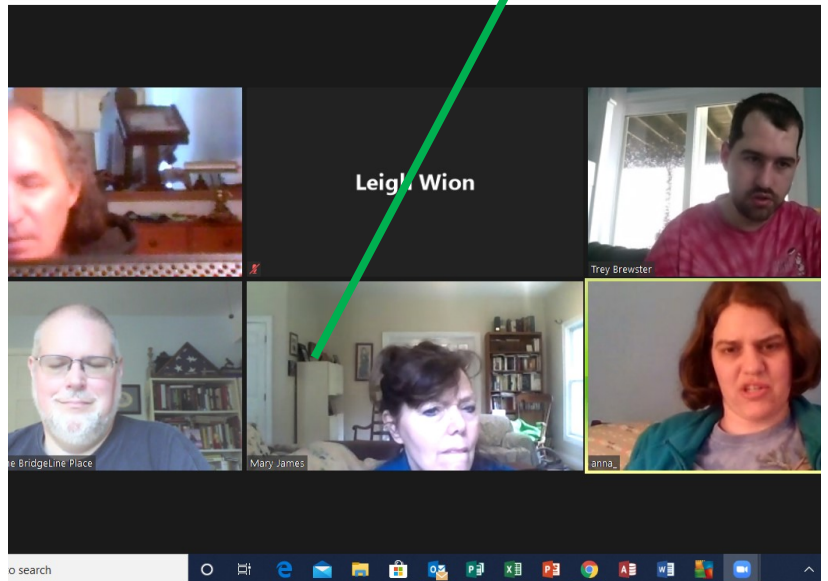
The BridgeLine PPlace have been coping with the pandemic that we are now having. This virus has brought some challenges that have now brought us to doing online and virtual clubhouse meetings that have evolved since we started doing them, what feels like ages ago. Using a video teleconferencing called Zoom. After a few meetings we decided to start to do jobs virtually. If you have seen from Facebook which is one of the jobs that can be done at home or at the clubhouse. We can only do a few computer jobs but I believe it is helping to bring some normal in members, who attend, days.

In addition we have added in some other components of the day at the clubhouse to be done virtually. On Fridays we take time after the business of the call to do yoga, being led by a member. Also we have been doing art on Mondays in which they have enjoyed bettering their knowledge and skill in art. Finally we have also had other people such as people we saw at the IX building and State Legislators. We also had people from Law offices for advocacy presentations. We have been busy during the pandemic while staying safe.

## CLUBHOUSE SOCIALS & RECREATION

"Keep your head down, eyes on the ball, and swing nice and easy" is going through John's head as he practices his golf swing in his back yard.

Mary visits with the members and staff one day. Mary is a counselor who rents and office in our building.



## BOOK REVIEW BY: MARY L.

Let me start again I will be writing about a book written by Steven James called The knight. It is a thriller, which is something I would not have ever though I would have liked but this one just sucked me in. I like story's that can do that. It was on May 15th at bearcraft mines. In Colorado about 40 miles from Denver. There had been a murder and the F.B.I. had been called in on the case Apparently there had been a double homicide the day before, in Littleton. And they though this had the same markings. If you would like to know more please get the book. It is well worth it. I absolutely though it was the second best book I have ever read.

## BIRTHDAYS

BY: ANNA M.

April

May

June

Mary L

Renee C

July

August

September

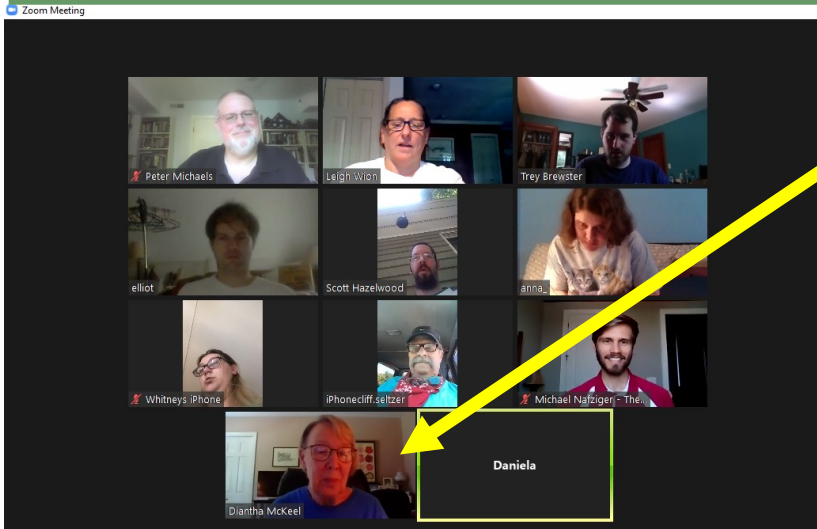
Anna M

Trey B

Kevin B.

Daniela P

## VIRTUAL ADVOCACY VISITS—ALBEMARLE COUNTY BOARD OF SUPERVISORS

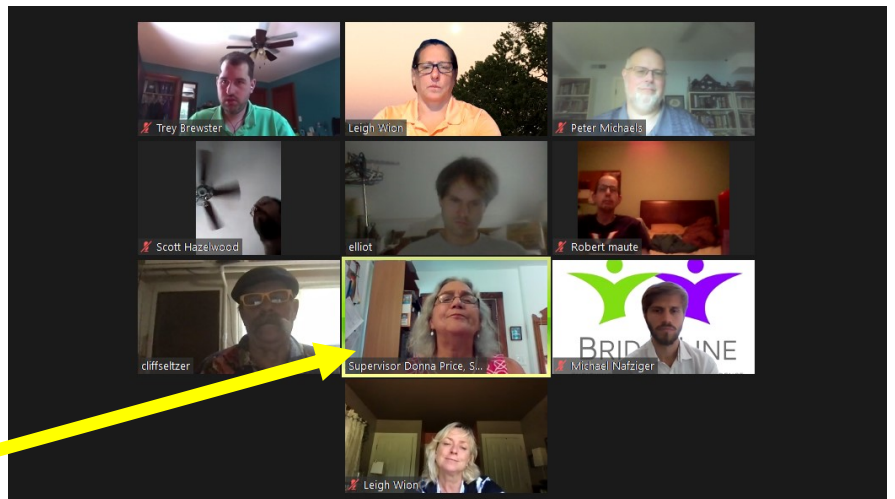


This is Albemarle County Supervisor **Diantha McKeel**. We asked about her work on the Regional Affordable Housing Board and the Regional Transportation and the Virginia Department of Rail and Transportation.

Ms. McKeel has attended our BridgeLine fundraisers because her son-in-law was a BridgeLine Board Member.

This is Albemarle County Supervisor, **Donna Price**.

Ms. Price has a family member with a brain injury and had visited with us at clubhouse last year. She is a committee member of the Albemarle Broadband Authority We talked about how not all our members have access to internet services or if they do, the service is cost prohibitive in their monthly budget.



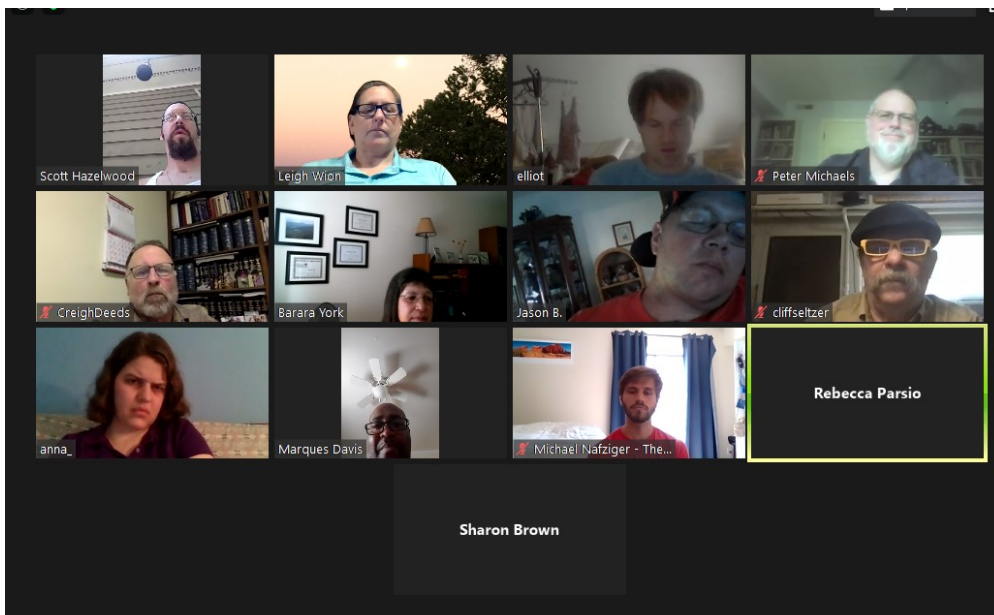
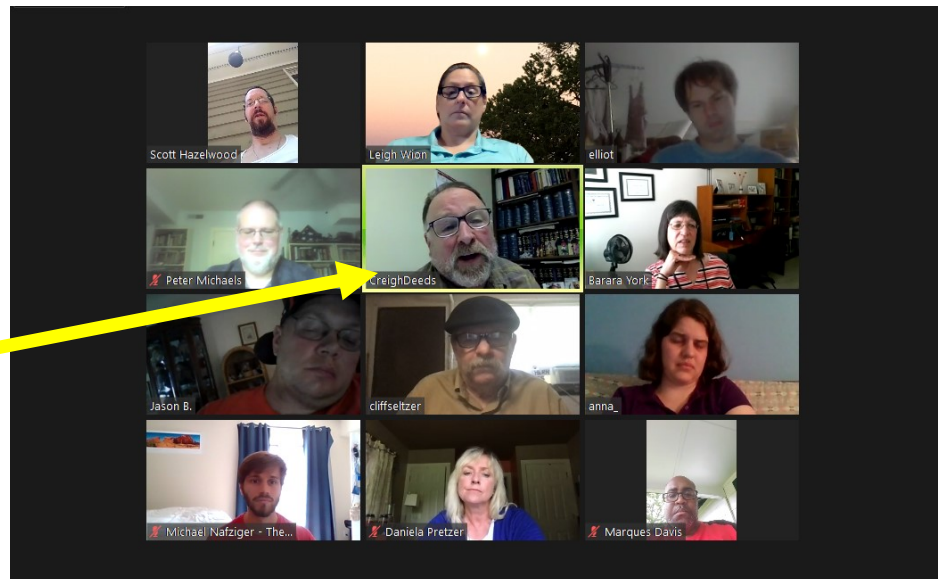


## VIRTUAL ADVOCACY VISITS—COMMONWEALTH OF VIRGINIA



This is **Jake Gold**, Legislative Aide to Delegate Sally Hudson. Delegate Hudson was not able to fit us into her busy schedule, but we had a very good visit with Jake. Jake was our first virtual advocacy visit and Leigh forgot to take a screen shot.

**Senator Creigh Deeds** spent a lot of time with us in our virtual advocacy visit and answered our questions about the state budget, mental health reform, and the new law that an individual can voluntarily have a designation of brain injury on their Driver's License or their Photo ID



**Senator Deed's** office arranged for two representatives from the Virginia Department of Motor Vehicles, **Rebecca Parsio** and **Sharon Brown**, to join the Zoom meeting to answer questions about the process of voluntarily adding the designation of brain injury on a Driver's License or Photo ID.

**IT'S NOT OUR CLUBHOUSE GARDEN, BUT HERE ARE SOME PHOTOS OF WHAT'S GROWING IN THE GARDENS OF OUR MEMBERS AND STAFF**



These pictures are from Leigh's house. Most of Leigh's vegetable plants are in her landscaping beds where her cat Blizzy "guards" the catnip!



These pictures are from Trey's family's garden. The squash and cucumbers are looking good!



Peter has pictures of beautiful flowers at his house and at Belmont House.





The BridgeLine's 8th Annual  
**Comedy Night**

Presented By:



Headliner  
**Rahn  
Hortman!**



**Mike  
Easmeil!**

Date: Saturday May 2nd, 2020

Doors open at 6:00pm

**LOL... Laugh Out Later!**

Where: Fry's  
2512 Jefferson Park Ave  
Charlottesville VA 22903



Many of you may know that I have a special relationship with "Lola". Lola was so disappointed that we'll be "Laughing Out Loud Later" but she told me that she understands and will take this time to shop for just the right dress to wear when our Fundraising Team is able to present this annual event safely.

Leigh



# ***BridgeLine***

Enriching Lives—Fostering Independence

**953 2nd Street SE,  
Suite 410,  
Charlottesville, VA,  
22902**

**Phone: 434-220-4596**

**Email:**

**thebridgelineplace@outlook.com**



**Copy & paste the addresses below to read more about us!**

**Facebook:** <https://www.facebook.com/BridgeLinePlace>

**Website:** <https://www.thebridgeline.org/>

## **CLUBHOUSE WISH LIST & SUPPORTING BRIDGELINE PLACE**

**There are many ways that you can support the BridgeLine Place to continue to provide a community based clubhouse program to people living in the Charlottesville area. We depend on community supporters in so many ways especially now during these unprecedented times of the COVID-19 Pandemic!**

**All monetary donations to the clubhouse are used for program supplies, activities of the clubhouse, or your specific designation how the funds be utilized. Your donations can be mailed to the address listed at the top of this page.**

**If you prefer to donate a specific item, here are some suggestions:**

- **Paper products—paper towels or toilet paper**
- **Masks, Hand Sanitizer, and Soap**
- **Non-Perishable Food or Canned Items**
- **Cleaning Supplies**